



OPERATIONS MANUAL

The details of this manual are designed for administrative purposes, are subject to unannounced changes, and should not be used for navigation.

Infrastructure & Port Services		
Critical Terminal Data	Kathy Alves, Director of Port Operations 40 Commercial Street Portland, ME 04101 207-808-5401 kra@portlandmaine.gov	LAT 43° 39' 32"N LON 70° 14' 43"W
		Up to 1100' vessels Up to 5,000 passengers
Piers & Gangways	Portland Ocean Terminal – 950' 32' at MLLW. <ul style="list-style-type: none"> • Pier Deck 16' above MLLW. • Gangway range 14' above pier deck. Ocean Gateway Terminal - Berth 1 – 400' w/200' dolphin extension; 32' depth MLLW. <ul style="list-style-type: none"> • Gangway range 12' above pier deck. Ocean Gateway Terminal - Berth 2 – 1100'; 35' depth MLLW. <ul style="list-style-type: none"> • Yokohama fenders with Breasting Pile Miscellaneous gangways onsite at OGT and POT.	
Tugs	Full time ship assists tugs up to 3,500 HP Portland Tugboat Company 207- 772-8319	
Port Services	<ul style="list-style-type: none"> ✓ Customs & Border Protection ✓ ISPS/MTSA Compliant (46 CFR 105) ✓ Bunkers (barge & trucks) ✓ Potable Water ✓ Garbage Disposal ✓ Marine Supplies 	Stevedore Details Ports America Inc. Jack Humeniuk - 207-772-0113 Jack.Humeniuk@portsamerica.com
Guest Services	Direct walking access to downtown sites and activities from the berth. <ul style="list-style-type: none"> ✓ Visitor information ✓ Comfort Station ✓ On-site Restrooms ✓ Free Wi-Fi ✓ Taxi services ✓ Public Transport + 1.5 miles Maine Medical Center/Mercy Hospital ✈ 7 miles Portland International Jet Port	
Planned Upgrades	Portland Ocean Terminal - Fender system replacement: Start date November 2018 end date March 2019. The project will replace half of the existing composite fender system with 5/8" x 18" steel pipe pile.	
Notional Projects	<ul style="list-style-type: none"> • Portland Ocean Terminal - pile replacement, deck repairs. • Ocean Gateway Pier 1 - Pile jackets and under deck concrete repairs. • Center Pier for tugs and smaller ships. 	

Climate	
Weather	Portland has very pleasant Summers and falls with cold Winters. The wettest month is November with about 5 inches (127 mm) of rain. July and August are driest each averaging 2.9 inches (74 mm) of rain. Winds are quite light with the highest velocities being confined mostly to April and May. The prevailing winds are Southerly during the Summer and Northerly during the Winter. Fogs occur most frequently June - September but happen each month of the year. The warmest month is July with an average high of 79 °F and an average low of 58 °F. The coolest month is January with an average high of 31 °F and an average low of 12 °F.

Navigation	
Approach	<ul style="list-style-type: none"> • A Traffic Separation Scheme is established in the approaches to Portland Harbor. • The scheme is comprised of directed traffic lanes each with one-way inbound and outbound traffic lanes separated by defined separation zones and a precautionary area. • Use NOAA charts 13260 and 13286. • The Coast Guard advises 0.25 mile as the minimum visibility for Portland Inner Harbor. • Note that the offshore approaches are an endangered Right Whale habitat. • Portland is a sewage no discharge zone.
Channel Controlling Depth	<ul style="list-style-type: none"> • 47.5-foot channel from the sea to Fort Gorges. • 35' in the Inner Harbor and Fore River.
Depth at Dock	Portland Ocean Terminal: 32'; Ocean Gateway Berth 2: 35'; Ocean Gateway Pier 1: 32'
Under Keel Clearance	<p>The Coast Guard recommends a minimum under-keel clearance as follows:</p> <ul style="list-style-type: none"> • 3' when transiting inside a line drawn between Ram Island Ledge Light and Portland Head Light to Portland Pipeline Pier 2 (at the entrance to Fore River). • 2' when transiting Dredged Channel Lighted Buoy 5, including Fore River. • 2' when transiting via Hussey Sound inside Lighted Gong Buoy 3 and Lighted Buoy 4. • 1' is recommended for all berthing areas.
Tidal Range	8' - 12'.
Max Current	1.1 knots (0.9 knots at MLW).
Anchorage	<ul style="list-style-type: none"> • Anchorage A (Fish Point) 25' - 30'. • Anchorage B 45' - 50' (Reserved for large vessels).
Pilots	<p>Pilotage is compulsory for all foreign vessels and U.S. vessels under register in the foreign trade drawing over 9'.</p> <ul style="list-style-type: none"> • The pilot boarding area with a 2-mile radius is centered at 43°31'36.6"N., 70°05'30.0"W (Papa Buoy). The distance from the Pilot Station to the berth is approximately 9 miles. • Portland Pilots Inc. 207- 774-5623.
Turning Basins	N/A

Port Fees				
Fee Structure	For Vessels over 1000 passengers			
	Year	Per-passenger	Infrastructure fee	Total
	2019	\$12.00	\$2.00	\$14.00
	2020	\$12.50	\$2.00	\$14.50
	2021	\$13.00	\$2.00	\$15.00
	2022	\$13.50	\$2.00	\$15.50
	2023	\$14.00	\$2.00	\$16.00
	Gangway and security are included in the price. Freshwater is an extra charge.			
	Incentives			
	<ul style="list-style-type: none"> • May and June the Port will give a \$2,000 incentive for each visit. • July and August the Port will give a \$1,500 incentive for each visit. 			
	Vessels under 1000 passengers			
	Passengers: \$8.00 per manifested passenger upon arrival.			
	Berthing: \$2.50 per foot of vessel overall length per calendar day or fraction.			
	Incentives			
	<ul style="list-style-type: none"> • 5 or more visits during May, June, July and August receive a 5% incentive. • 10 or more visits during May, June, July and August receive a 10% incentive. 			
	Gangway, security, freshwater, fendering are extra charges.			

Infrastructure & Port Services		
Critical Terminal Data	Jason Morin, Director of Programs & Ops Maine Maritime Museum 243 Washington Street Bath, ME 04530 207-443-1316 ext.333 Morin@maritimeme.org	LAT 43°53'32" N LON 69°48'54" W
		Up to 215' Up to 150 passengers
Piers & Gangways	<ul style="list-style-type: none"> Deering Pier is a fixed pier of approximately 70' there are 2 dolphins one to the North and one to the South of the pier (bow and stern lines). The dolphins are about 150' apart. There are currently no camels or gangways available. Vessels must carry their own gangway to offload passengers. 	
Tugs	<ul style="list-style-type: none"> 1 ship assist tug of 3,000 HP is located in Bath - Winslow Tugs 207- 780-8847 Additional ship assists tug up to 3,500 HP are in Portland – Portland Tugboat Company 207-772-8319 (2-hour transit). 	
Port Services	<ul style="list-style-type: none"> ✓ Fuel (trucks) ✓ Garbage Disposal ✓ Marine Supplies 	
Guest Services	Direct walking access to the Maine Maritime Museum from the berth. Downtown sites and activities are a 1-mile walk from the berth. The pier has great access for buses, trolleys and truck deliveries. <ul style="list-style-type: none"> ✓ Visitor information ✓ On-site Restrooms ✓ Free Wi-Fi ✓ Taxi services ✓ Public Transport ✚ 6 miles Mid-Coast Hospital ✈ 8 miles to Brunswick Executive Airport 39 miles to Portland International Jet Port 	
Planned Upgrades	<ul style="list-style-type: none"> The Museum is planning a major renovation to include improved parking, scenic walking paths, additional green spaces and outdoor exhibits, and a boardwalk with educational panels. Pier access will be improved for buses and delivery trucks. The project may tentatively start in the Fall of 2018 and be completed by Spring of 2019 pending funding. The alternative plan is to begin in Fall of 2019 and be completed by 2020. The total project cost is approximately \$3 million. 	
Notional Projects	<ul style="list-style-type: none"> Adding a gangway. Increasing the availability of water and power. Improving security infrastructure. Enhancing waiting stations. Increasing Wi-Fi service. 	

Climate	
Weather	Bath has very pleasant Summers and falls with cold Winters. The wettest month is October with about 4.3 inches (109 mm) of rain. January is the driest month with only 1.5 inches (38 mm) of rain although July and August are similarly dry. Bath experiences seasonal wind variation over the course of the year. The windier part of the year is October to April, with average wind speeds of 7.3 MPH. The calmer time of year is from April to October with winds predominately from the South. Fogs occur most frequently August - September but happen each month of the year. The warmest month is July with temperatures between 61°F - 79 °F. The coolest month is January with temperatures between 14°F -31°F.

Navigation	
Approach	<ul style="list-style-type: none"> • The best approach from sea for large ships is from the Southeast. • Use NOAA charts 13295 and 13296. • 10 Nautical Miles up Kennebec River. • Vessels over 600' not able to navigate past Fiddlers Reach. • The Bath Iron Works facility to the North of the cruise ship dock has a strictly enforced security zone which may not be entered. The zone is well marked with buoys and signage. • Note that the offshore approaches to Penobscot Bay are an endangered Right Whale habitat.
Channel Controlling Depth	27'.
Depth at Dock	17'.
Under Keel Clearance	<ul style="list-style-type: none"> • The recommended industry standard is 10% of the vessel's deepest draft or 3' under keel (whichever is greater).
Tidal Range	8' - 10'.
Max Current	3-4 knots (6 knots max current).
Anchorage	<ul style="list-style-type: none"> • There are no designated Federal Anchorages.
Pilots	<p>Pilotage is compulsory for all foreign vessels and U.S. vessels under register in the foreign trade drawing over 9'.</p> <ul style="list-style-type: none"> • The pilot boarding area is located at the White Ledge Lighted Bell Buoy 1 at 43°43'54"N., 69°44'18.5"W. The distance from the Pilot Station to the berth is approximately 10 miles. • Kennebec River Pilotage is provided by Portland Pilots Inc. 207- 774-5623.
Turning Basins	N/A.



Port Fees	
Fee Structure	<ul style="list-style-type: none"> • Dockage rate is currently \$3.50 per-foot. • The Museum's group admission rate is \$13 per-passenger. • Currently no other fees are charged. • Fees are reviewed annually in October for the next season and would likely not change by more than a \$1 per-foot.

Infrastructure & Port Services		
Critical Terminal Data	Nick Upham, Harbor Master 11 Howard Street Boothbay, ME 04538 207-380-5635 nupham@boothbayharbor.org	LAT 43° 51' 01"N LON 69° 38' 10"W • Tendering Port Only Up to 600' Up to 150 passengers
Piers & Gangways	Town Dock 170' floating wooden floats with gangway to shore.	
Tugs	1 ship assist tug of 3,000 HP is located in Bath - Winslow Tugs 207- 780-8847. Additional ship assist tugs up to 3,500 HP are in Portland - Portland Tugboat Company (207) 772-8319 (2-hour transit).	
Port Services	<ul style="list-style-type: none"> ✓ Service Technicians ✓ Marine Supplies 	
Guest Services	Direct walking access to downtown sites and activities from the Town Dock. <ul style="list-style-type: none"> ✓ On-site Restrooms ✓ Free Wi-Fi ✓ Taxi services ✓ Public Transport ✚ 3 miles Lincoln Health St. Andrews Campus 27 miles Mid-Coast Hospital ✈ 29 miles to Brunswick Executive Airport 58 miles to Portland International Jet Port 	
Planned Upgrades	None.	
Notional Projects	None.	

Climate	
Weather	Boothbay Harbor has very pleasant Summers and falls with cold Winters. The wettest month is October with about 4.3 inches (109 mm) of rain. January is the driest month with only 1.8 inches (45 mm) of rain. Winds are quite light with the highest velocities being confined mostly to April and May. The windier part of the year is October to April, with average wind speeds of 8.6 MPH. The calmer time of year is from April to October with winds predominately from the South. Fogs occur most frequently June - September. The warmest month is July with temperatures between 60°F - 76°F and an average low of 58 °F. The coolest month is January with temperatures between 15°F - 32°F.

Navigation	
Approach	<ul style="list-style-type: none"> • The best approach from sea for large ships is from the South. • Use NOAA charts 13296 and 13293. • The area may have extensive lobster buoys and commercial fishing activity as well as commercial schooner traffic. • Note that the offshore approaches are an endangered Right Whale habitat. • Boothbay Harbor is a sewage no discharge zone.
Channel Depth	<ul style="list-style-type: none"> • 50' - 100'+ foot deep channel from the sea to Burnt Island (with shallow spots and shoals outside of the channel). • 20' - 44' in the Inner Harbor.
Depth at Dock	15-25'.
Under Keel Clearance	• The recommended industry standard is 10% of the vessel's deepest draft or 3' under keel (whichever is greater).
Tidal Range	8' - 10'.
Max Current	Less than 1 knot in the harbor.
Anchorage	<ul style="list-style-type: none"> • Fuller Marine Services offers a single mooring off Tumbler Island (depth 24' - 42'). (2-10,000-pound blocks sunk into the mud with ¾" chain with a poly float for easy pick up with 2 50' 2" pendants) suitable for a 250' vessel. • The tender distance to shore is approximately 6/10 mile. (Fuller Marine Services 207-633-2214). • Alternatively, there is good holding ground East of Burnt Island for ships up to 600' (depth of 50' -70'). This location will keep well marked cable areas to the South. This anchorage is well protected but lies outside of the inner harbor (about 2 miles to the town).
Pilots	<p>Pilotage is compulsory for all foreign vessels and U.S. vessels under register in the foreign trade drawing over 9'.</p> <ul style="list-style-type: none"> • The pilot boarding area is 1-mile South of the Cuckholds Light at 43°45'45.6"N, 68°39'59"W. • The distance from the Pilot Station to the Burnt Island anchorage is approximately 4.5 miles. • Shipping Services 207- 633-3336.
Turning Basins	N/A.

Port Fees	
Fee Structure	<ul style="list-style-type: none"> • \$275 per-day (Fuller Marine Services). • No fee for tendering at the Public Landing.

Infrastructure & Port Services		
Critical Terminal Data	Matt Ripley, Rockland Harbormaster Rockland Town Landing 270 Pleasant Street Rockland ME, 04841 207-691-1952 mripley@rocklandmaine.gov	LAT 44° 06' 02"N LON 69° 06' 22"W
		Up to 1,100 Up to 3,000 passengers in Sept/Oct Up to 500 passengers Jan-Aug & Nov-Dec Up to 215' at the Public Landing
Piers & Gangways	The Rockland Public Landing is currently the only USCG 105 secure facility in the harbor. <ul style="list-style-type: none"> • 175' floating dock (approximately 2' above sea level) capable of mooring ships up to 215'. • Mean low water depth of 12' at the dock. • Ships must provide their own gangway. 	
Tugs	3 full time ship assist tugs up to 4,000 HP-Belfast Penobscot Tractor Tug Co. 207- 671-4878.	
Port Services	<ul style="list-style-type: none"> ✓ ISPS/MTSA Compliant (46 CFR 105) ✓ Fuel (boat) ✓ Potable Water ✓ Garbage Disposal ✓ Electricity/Shore Power (100 amp) ✓ Repair facilities ✓ Marine Supplies 	
Guest Services	Direct walking access to downtown sites and activities from berth. <ul style="list-style-type: none"> ✓ Visitor information ✓ On-site Restrooms ✓ Free Wi-Fi ✓ Taxi services ✓ Public Transport ✓ Parking <div style="display: flex; align-items: center;"> <div style="margin-right: 20px;">  5 miles Pen Bay Medical Center  3 miles Owls Head Regional Airport 81 miles Portland International Jet Port </div> </div>	
Planned Upgrades	The City of Rockland created an ad-hoc committee to examine harbor issues and will develop a Harbor Management Plan (including cruise ship policies) by the end of 2019.	
Notional Projects	None.	

Climate	
Weather	Rockland Summers are comfortable, the Winters, however are very cold and blustery. It is partly cloudy year-round. The wettest month is November with about 4.4 inches (111 mm) of rain. January is the driest month averaging 1.9 inches (48 mm) of rain. July and August are similarly dry at about 2.6 inches of rain (66 mm). The windier part of the year is October to April, with average wind speeds of 8.9 MPH. The calmer time of year is from April to October with winds predominately from the South at 5.8 MPH on average. Fogs can occur most frequently in Spring and Summer but happen each month of the year. The warmest month is July with an average high of 75 °F and an average low of 59 °F. The coolest month is January with an average high of 31 °F and an average low of 14 °F.

Navigation	
Approach	<ul style="list-style-type: none"> • A Federal project provides an approach channel and three branch channels within Rockland Harbor, each with a turning basin.

	<ul style="list-style-type: none"> • A Recommended Route through Penobscot Bay is established to improve navigation safety of larger ships (the recommended route is well marked on the navigation charts). The routes are comprised of directed traffic lanes each with one-way inbound and outbound traffic. • Use NOAA charts 13309, 13302, 13303 and 13305. • The area may have extensive lobster buoys and commercial fishing activity. • The Maine State Ferry Service offers vehicle ferry access to local islands adding to the traffic make-up. • There is also heavy recreational boating and commercial schooner operations in the area. • Note that the offshore approaches to Penobscot Bay are an endangered Right Whale habitat. • Rockland is a sewage no discharge zone.
Channel Depth	<ul style="list-style-type: none"> • In 2013, the controlling depth in the entrance channel was 17.5'. • 13.5' in the Southwestern channel and 14' in the basin. • 11' in the channel leading North to Crockett Point. • 11' in the northern channel with depths of 13' available in the Northern basin. • 11' in the Western channel and turning basin. • All channels are buoyed.
Depth at Dock	12'.
Under Keel Clearance	<ul style="list-style-type: none"> • The recommended industry standard is 10% of the vessel's deepest draft or 3' under keel (whichever is greater).
Tidal Range	10'.
Max Current	2 knots.
Anchorage	<ul style="list-style-type: none"> • 2 Federal anchorages are in Rockland Harbor which are noted on NOAA chart 13307. • Anchorage A is suitable for cruise ships up to 1100' but ships over 700' are recommended to utilize Dynamic Positioning due to limited swing area. The anchorage is well sheltered with an approximate distance to Public Landing from Anchorage is 3/4 nm. • Anchorage B is suitable for ships up to 450' which is about 0.75 miles from the Public Landing. • Larger ships not equipped with Dynamic Positioning may anchor in Broad Cove with water depths over 65'. Broad Cove is approximately 1.8 miles from the Public Landing.
Pilots	<p>Pilotage is compulsory for all foreign vessels and U.S. vessels under register in the foreign trade drawing over 9'. There are two pilot boarding areas:</p> <ul style="list-style-type: none"> • Eastern entrance to Penobscot Bay, via Lighted Whistle Buoy PBA at 43°55'37"N, 68°39'37"W and follow the Recommended Route due west. The pilot will board 3 miles East of Penobscot Bay Lighted Buoy WP at 43°55'30"N, 68°48'48"W. • Western entrance, pilots will board at 43°46'36"N, 69°22'36"W approximately 1 mile north of Manana Island (virtual AIS Aid to Navigation) V-AIS "14M" (43°45'19"N, 69°22'28"W). The pilots require 36, 24- and 12-hour ETAs, as no pilot boats are maintained on station. • Rockland is 31 miles from the Two Bush Channel pilot station and 18 miles from Matinicus. • Penobscot Bay and River Pilots Inc. 207- 548-1077.
Turning Basins	Turning basin adjacent to the Rockland Public Landing is 14' deep.

Port Fees

Fee Structure	<p>Cruise Ships Mooring to the Dock</p> <ul style="list-style-type: none"> • \$3.00 per foot per-day. • \$175.00 service fee. • \$10.00 per-passenger for ships requiring ISPS/MTSA security. <p>Cruise Ships at Anchor using Tendering.</p> <ul style="list-style-type: none"> • \$7.00 per-passenger.
---------------	---

Infrastructure & Port Services		
Critical Terminal Data	Steve Pixley, Camden Harbormaster Camden Harbor Master's Office 2 Public Landing PO Box 1207 Camden, ME 04843 207-236-3353 ext 7118 spixley@camdenmaine.gov	LAT 44° 12' 31"N LON 69° 03' 45"W • Tendering Port Only Up to 375' Up to 200 passengers
Piers & Gangways	<ul style="list-style-type: none"> • The Public Landing, is on the west side of the inner harbor and is equipped with 2 float landings with depths of 10' alongside. • The wharf is used by several excursion schooners which operate along the Maine coast from Camden during the summer. 	
Tugs	3 full time ship assist tugs up to 4,000 HP-Belfast Penobscot Tractor Tug Co. 207- 671-4878.	
Port Services	<ul style="list-style-type: none"> ✓ MTSA - Public Access Facility for non-SOLAS vessels (Public Landing) ✓ Limited repair facilities ✓ Marine Supplies 	
Guest Services	Direct walking access to downtown sites and activities from the Public Landing. <ul style="list-style-type: none"> ✓ Visitor information ✓ On-site Restrooms ✓ Free Wi-Fi ✓ Taxi services + 15 miles Pen Bay Medical Center ✈ 15 miles Owls Head Regional Airport 59 miles Bangor International Airport	
Planned Upgrades	Public Landing is going to be totally refurbished with new float system (adding 2' to width of dock) – estimated completion in 2020.	
Notional Projects	None.	

Climate	
Weather	Camden summers are comfortable, the Winters, however are very cold and blustery. It is partly cloudy year-round. The wettest month is November with about 4.4 inches (111 mm) of rain. January is the driest month averaging 1.9 inches (48 mm) of rain. July and August are similarly dry at about 2.6 inches of rain (66 mm). The windier part of the year is October to April, with average wind speeds of 8.9 MPH. The calmer time of year is from April to October with winds predominately from the South Southwest at 5.8 MPH on average. Fogs can occur most frequently in Spring and Summer but happen each month of the year. The warmest month is July with an average high of 75 °F and an average low of 59 °F. The coolest month is January with an average high of 31 °F and an average low of 14 °F.

Navigation	
Approach	<ul style="list-style-type: none"> • A Recommended Route through Penobscot Bay is established to improve navigation safety of larger ships (the recommended route is well marked on the navigation charts). The routes are comprised of directed traffic lanes each with one-way inbound and outbound traffic. • There is a well buoyed channel entrance to the harbor from the Southeast from Penobscot Bay. • Use NOAA charts 13309, 13302, 13303 and 13305. • The area may have extensive lobster buoys and commercial fishing activity. • There is also heavy recreational boating and commercial schooner operations in the area with congested mooring fields. • Note that the offshore approaches to Penobscot Bay are an endangered Right Whale habitat. • Camden is a sewage no discharge zone.
Channel Controlling Depth	<ul style="list-style-type: none"> • The entrance channel is approximately 32'-50' deep. • Camden Harbor ranges between 15'-34' water depth. • The channel is well buoyed.
Depth at Dock	8'.
Under Keel Clearance	The recommended industry standard is 10% of the vessel's deepest draft or 3' under keel (whichever is greater).
Tidal Range	10'.
Max Current	Weak and variable.
Anchorage	There are no designated Federal anchorages in the vicinity of Camden Harbor, however, the outer harbor affords good anchorage in depths of 13' to 33', with a soft bottom. Small cruise ships typically anchor in the vicinity of Curtis Island in about 27' of water.
Pilots	<p>Pilotage is compulsory for all foreign vessels and U.S. vessels under register in the foreign trade drawing over 9'. There are two pilot boarding areas:</p> <ul style="list-style-type: none"> • Eastern entrance to Penobscot Bay, via Lighted Whistle Buoy PBA at 43°55'37"N, 68°39'37"W and follow the Recommended Route due west. The pilot will board 3 miles East of Penobscot Bay Lighted Buoy WP at 43°55'30"N, 68°48'48"W. • Western entrance, pilots will board at 43°46'36"N, 69°22'36"W approximately 1 mile north of Manana Island (virtual AIS Aid to Navigation) V-AIS "14M" (43°45'19"N, 69°22'28"W). The pilots require 36, 24- and 12-hour ETAs, as no pilot boats are maintained on station. • Camden is 38 miles from the Two Bush Channel pilot station and 25 miles from Matinicus. • Penobscot Bay and River Pilots Inc. 207- 548-1077.
Turning Basins	Not applicable in Camden Harbor.

Port Fees	
Fee Structure	<p>Cruise Ships with 50 Passengers or Less</p> <ul style="list-style-type: none"> • \$150.00 flat fee for Public Landing tender landing. <p>Cruise Ships with 51 Passengers or More</p> <ul style="list-style-type: none"> • \$400.00 flat fee for Public Landing tender landing. <p><i>The Town of Camden is considering a change in fee structure to a "per-passenger" to be effective fee as early as 2019.</i></p>

Infrastructure & Port Services		
Critical Terminal Data	Katherine Pickering, Belfast Harbormaster Belfast Public Landing 25 Front Street Belfast ME, 04915 207- 338-1142 harbormaster@cityofbelfast.org	LAT 44° 25' 43.3"N LON 69° 00' 14.5"W
		Up to 215' Up to 200 passengers
Piers & Gangways	Belfast Public Landing. <ul style="list-style-type: none"> • Breakwater face dock - 120' long. • The dock is attached on the North end with a dolphin and a steel crib on the South end. • A second dolphin is located on the Southern quarter. 	
Tugs	3 full time ship assist tugs up to 4,000 HP-Belfast Penobscot Tractor Tug Co. 207- 671-4878.	
Port Services	<ul style="list-style-type: none"> ✓ MTSA - Public Access Facility for non-SOLAS vessels ✓ Fuel (trucks) ✓ Potable Water ✓ Garbage Disposal ✓ Electricity/Shore Power ✓ Repair facilities ✓ Marine Supplies 	
Guest Services	Direct walking access to downtown sites and activities from berth. <ul style="list-style-type: none"> ✓ Visitor information ✓ On-site Restrooms ✓ Free Wi-Fi ✓ Taxi services ✓ Public Transport ✓ Parking <p>✚ 1-mile Waldo County General Hospital</p> <p>✈ 9 miles Hancock, 3 miles Belfast Municipal Airport 40 miles Bangor International Airport</p>	
Planned Upgrades	Possible breakwater wave attenuator feasibility study is in progress.	
Notional Projects	Possibly upgrade shore power.	

Climate	
Weather	Belfast Summers are comfortable, the Winters, however are very cold and blustery. It is partly cloudy year-round. The wettest month is November with about 4.4 inches (111 mm) of rain. January is the driest month averaging 1.9 inches (48 mm) of rain. July and August are similarly dry at about 2.6 inches of rain (66 mm). The windier part of the year is October to April, with average wind speeds of 8.9 MPH. The calmer time of year is from April to October with winds predominately from the South-Southwest at 5.8 MPH on average. Fogs can occur most frequently in Spring and Summer but happen each month of the year. The warmest month is July with an average high of 75 °F and an average low of 59 °F. The coolest month is January with an average high of 31 °F and an average low of 14 °F.

Navigation	
Approach	<ul style="list-style-type: none"> • There is a well buoyed channel entrance to the harbor from the Southeast from Penobscot Bay with water depths of about 15'. • A Recommended Route through Penobscot Bay is established to improve navigation safety of larger ships (the recommended route is well marked on the navigation charts). The routes are comprised of directed traffic lanes each with one-way inbound and outbound traffic. • Use NOAA charts 13309, 13302, 13303 and 13305. • The Maine State Ferry Service offers vehicle ferry access to Islesboro Island (from Lincolnville) creating a potential crossing scenario for inbound/outbound vessels. • The area may have some lobster buoys and commercial fishing activity. • There is also heavy recreational boating in the area with multiple small boat mooring fields. • Note that the offshore approaches to Penobscot Bay are an endangered Right Whale habitat.
Channel Controlling Depth	<ul style="list-style-type: none"> • The entrance channel is approximately 15' deep. • The channel is well buoyed.
Depth at Dock	13'
Under Keel Clearance	The recommended industry standard is 10% of the vessel's deepest draft or 3' under keel (whichever is greater).
Tidal Range	10.5'.
Max Current	Up to 3 knots (with the ebb being stronger than flood).
Anchorage	<p>There are no designated Federal anchorages in the vicinity of Belfast Harbor, however, the bay affords good anchorage, exposed to Southeasterly winds. Good anchorage can be had off the entrance to the river Westward of Steels Ledge, in depths of 19' - 28'.</p> <p>There are also 2 vessel-to-vessel oil transfer anchorage areas in Penobscot Bay:</p> <ul style="list-style-type: none"> • 1.8 miles Northwest of Islesboro Island within a circle having a diameter of 2 miles, centered in 44°24'15"N, 68°55'25"W. • 2.1 miles Northeast of Turtle Head the Northernmost point on Islesboro Island, within a circle having a diameter of 1 mile centered in 44°25'00"N, 68°50'43"W.
Pilots	<p>Pilotage is compulsory for all foreign vessels and U.S. vessels under register in the foreign trade drawing over 9'. There are two pilot boarding areas:</p> <ul style="list-style-type: none"> • Eastern entrance to Penobscot Bay, via Lighted Whistle Buoy PBA at 43°55'37"N, 68°39'37"W and follow the Recommended Route due west. The pilot will board 3 miles East of Penobscot Bay Lighted Buoy WP at 43°55'30"N, 68°48'48"W. • Western entrance, pilots will board at 43°46'36"N; 69°22'36"W approximately 1 mile north of Manana Island (virtual AIS Aid to Navigation) V-AIS "14M" (43°45'19"N, 69°22'28"W). The pilots require 36, 24- and 12-hour ETAs, as no pilot boats are maintained on station. • Belfast is 48 miles from the Two Bush Channel pilot station and 34 miles from Matinicus. • Penobscot Bay and River Pilots Inc. 207- 548-1077.
Turning Basins	Not applicable in Belfast Harbor but there is a 400' area near the Public Landing to turn.

Port Fees	
Fee Structure	<ul style="list-style-type: none"> • \$3.00 per- foot per-night (includes potable water). • Fees will be reviewed for 2019 and may include per-passenger fee of \$11.00.

Infrastructure & Port Services		
Critical Terminal Data	Wayne Hamilton, Searsport Harbormaster Searsport Public Landing 40 Steamboat Avenue P.O. Box 499 Searsport ME 04974 207-323-0895 manager@searsport.maine.gov	LAT 44° 27' 30"N LON 68° 55' 27"W
		Up to 215' Up to 200 passengers
Piers & Gangways	Vessels opting to anchor: <ul style="list-style-type: none"> Access to the Public Landing requires tendering. 	
Tugs	3 full time ship assist tugs up to 4,000 HP-Belfast Penobscot Tractor Tug Co. 207- 671-4878.	
Port Services	<ul style="list-style-type: none"> ✓ MTSA - Public Access Facility for non-SOLAS vessels (Public Landing) ✓ Marine Supplies 	
Guest Services	Direct walking access to downtown sites and activities from the Public Landing (1/2-mile walk). <ul style="list-style-type: none"> ✓ Taxi services + 9 miles Waldo County General Hospital ✈ 8 miles Belfast Municipal Airport 32 miles Bangor International Airport 	
Planned Upgrades	None.	
Notional Projects	None.	

Climate	
Weather	Searsport Summers are warm and comfortable, the Winters, however are very cold and blustery. It is partly cloudy year-round. The wettest month is November with about 4.4 inches (111 mm) of rain. January is the driest month averaging 1.9 inches (48 mm) of rain. July and August are similarly dry at about 2.6 inches of rain (66 mm). The windier part of the year is October to April, with average wind speeds of 8.9 MPH. The calmer time of year is from April to October with winds predominately from the South-Southwest at 5.8 MPH on average. Fogs can occur most frequently in Spring and Summer but happen each month of the year. The warmest month is July with an average high of 77 °F and an average low of 60 °F. The coolest month is January with an average high of 29 °F and an average low of 12°F.

Navigation	
Approach	<ul style="list-style-type: none"> • A Recommended Route through Penobscot Bay is established to improve navigation safety of larger ships (the recommended route is well marked on the navigation charts). The routes are comprised of directed traffic lanes each with one-way inbound and outbound traffic. • The main channel on approach to Searsport has depths over 40'. The depth around the Hamilton Wharf (town Landing) is about 4' at low tide. • Use NOAA charts 13309, 13302, 13303 and 13305. • The Maine State Ferry Service offers vehicle ferry access to Islesboro Island (from Lincolnville) creating a potential crossing scenario for inbound/outbound vessels. • The area may have extensive lobster buoys and commercial fishing activity. • Note that the offshore approaches to Penobscot Bay are an endangered Right Whale habitat.
Channel Controlling Depth	<ul style="list-style-type: none"> • The deep draft approach channel is 35'. • The channel is well buoyed.
Depth at Dock	<ul style="list-style-type: none"> • As little as 4' at the Public Landing.
Under Keel Clearance	The recommended industry standard is 10% of the vessel's deepest draft or 3' under keel (whichever is greater).
Tidal Range	10'.
Max Current	Weak and variable up to 1 knot.
Anchorage	<ul style="list-style-type: none"> • There are no designated Federal anchorages in the vicinity of Searsport Harbor, however, there is anchoring is safe in positions as close as 200 yards off shore where the depth is 23' with a muddy bottom. • Alternatively, anchoring is possible up to 1 mile from shore where the depth is between 32' and 45' with a muddy bottom. The dominant wind is Southwesterly. • There are also 2 vessel-to-vessel oil transfer anchorage areas in Penobscot Bay: <ul style="list-style-type: none"> • 1.8 miles Northwest of Islesboro Island within a circle having a diameter of 2 miles, centered in 44°24'15"N, 68°55'25"W. • 2.1 miles northeast of Turtle Head the northernmost point on Islesboro Island, within a circle having a diameter of 1 mile centered in 44°25'00"N, 68°50'43"W.
Pilots	<p>Pilotage is compulsory for all foreign vessels and U.S. vessels under register in the foreign trade drawing over 9'. There are two pilot boarding areas:</p> <ul style="list-style-type: none"> • Eastern entrance to Penobscot Bay via Lighted Whistle Buoy PBA at 43°55'37"N, 68°39'37"W and follow the Recommended Route due west. The pilot will board 3 miles East of Penobscot Bay Lighted Buoy WP at 43°55'30"N, 68°48'48"W. • Western entrance, pilots will board at 43°46'36"N, 69°22'36"W approximately 1 mile north of Manana Island (virtual AIS Aid to Navigation) V-AIS "14M" (43°45'19"N, 69°22'28"W). The pilots require 36, 24- and 12-hour ETAs, as no pilot boats are maintained on station. • Searsport is 50 miles from the Two Bush Channel pilot station and 36 miles from Matinicus. • Penobscot Bay and River Pilots Inc. 207- 548-1077.
Turning Basins	Not applicable in Searsport.

Port Fees	
Fee Structure	<p>No fees.</p> <p><i>The Town of Searsport is currently developing a cruise ship fee structure.</i></p>

Infrastructure & Port Services		
Critical Terminal Data	Mike Ormsby, Bucksport Harbormaster Bucksport Public Landing P.O. Box 358 Bucksport, ME 04416 207-469-8186 mykso@roadrunner.com	LAT 44° 34' 21"N LON 68° 47' 50"W
		Up to 370' Up to 420 passengers
Piers & Gangways	<ul style="list-style-type: none"> • 700' berth with depths of 35' alongside and can accommodate vessels up to 65,000 DWT. <p>There is a Public Dock capable of handling smaller cruise ships up to 280-300'.</p> <ul style="list-style-type: none"> • 315' wooden float system attached to steel I beam pilings and connected by an aluminum ramp system to a stationary wooden pier. • Depth at the dock face is approximately 14' at MWL. • Vessel must provide its own gangway. 	
Tugs	3 full time ship assist tugs up to 4,000 HP-Belfast Penobscot Tractor Tug Co. 207- 671-4878.	
Port Services	<ul style="list-style-type: none"> ✓ MTSA - Public Access Facility for non-SOLAS vessels (Public Landing) ✓ Fuel (trucks) ✓ Potable Water ✓ Garbage Disposal ✓ Electricity/Shore Power (up to 100 amp) ✓ Marine Supplies ✓ Shuttle Service 	
Guest Services	<p>Direct walking access to downtown sites and activities from berth.</p> <ul style="list-style-type: none"> ✓ Visitor information ✓ On-site Restrooms ✓ Free Wi-Fi ✓ Taxi services ✓ Public Transport ✓ Parking <p>✚ ½ mile Bucksport Regional Health Center 19 miles Waldo County General Hospital</p> <p>✈ 22 miles Bangor International Airport</p>	
Planned Upgrades	A new pier is under construction (upgraded heavy duty decking) to be complete for 2019 season.	
Notional Projects	There is a longer-term plan to upgrade the dock to 400' with concrete floats for year-round service as well as to install a 140' ADA compliant ramp system.	

Climate	
Weather	<p>Bucksport Summers are comfortable, the Winters, however are very cold and blustery. It is partly cloudy year-round. The wettest month is October with about 4.1 inches (104 mm) of rain. January is the driest month averaging 1.4 inches (35 mm) of rain. August and September are similarly dry at about 2.7 inches of rain (53 mm). The windier part of the year is October to April, with average wind speeds of 5.9 MPH from the West. The calmer time of year is from April to October with winds predominately from the South at 4.4 MPH on average. Fogs can occur most frequently in Spring and Summer but happen each month of the year. The warmest month is July with an average high of 79 °F and an average low of 60 °F. The coolest month is January with an average high of 29 °F and an average low of 11 °F.</p>

Navigation	
Approach	<ul style="list-style-type: none"> • Bucksport is located about 10 miles up the Penobscot River. • A Recommended Route through Penobscot Bay is established to improve navigation safety of larger ships (the recommended route is well marked on the navigation charts). The routes are comprised of directed traffic lanes each with one-way inbound and outbound traffic. • Use NOAA charts 13309, 13302, 13303 and 13305. • The channel in Penobscot River is crooked and narrow in places with light vessel traffic. The approach includes the Penobscot Narrows Bridge which is well lit at night with a 428' horizontal clearance and a 143' vertical clearance. • The safest time is on a rising tide. • Navigation of the river at night is possible but daylight transits are advised. At times of maximum ebb currents, buoys are occasionally pulled under. • Note that the offshore approaches to Penobscot Bay are an endangered Right Whale habitat.
Channel Controlling Depth	<ul style="list-style-type: none"> • 28' at low water • 35' at high water.
Depth at Dock	14'.
Under Keel Clearance	The recommended industry standard is 10% of the vessel's deepest draft or 3' under keel (whichever is greater).
Tidal Range	11'.
Max Current	Currents of 3 knots are not unusual. Currents can exceed 5 knots with currents as high 7 knots particularly during the Spring run-off.
Anchorage	<ul style="list-style-type: none"> • Anchoring in river is possible (off the oil dock) in 73' water for vessels with good/ appropriate ground tackle.
Pilots	<p>Pilotage is compulsory for all foreign vessels and U.S. vessels under register in the foreign trade drawing over 9'. There are two pilot boarding areas:</p> <ul style="list-style-type: none"> • Eastern entrance to Penobscot Bay, via Lighted Whistle Buoy PBA at 43°55'37"N, 68°39'37"W and follow the Recommended Route due west. The pilot will board 3 miles East of Penobscot Bay Lighted Buoy WP at 43°55'30"N, 68°48'48"W. • Western entrance, pilots will board at 43°46'36"N, 69°22'36"W approximately 1 mile north of Manana Island (virtual AIS Aid to Navigation) V-AIS "14M" (43°45'19"N, 69°22'28"W). The pilots require 36, 24- and 12-hour ETAs, as no pilot boats are maintained on station. • Bucksport is 56 miles from the Two Bush Channel pilot station and 42 miles from Matinicus. • Penobscot Bay and River Pilots Inc. 207- 548-1077.
Turning Basins	There is a deep-water dog leg in the river adjacent to the commercial piers that offers at least a 1200' turning diameter.

Port Fees	
Fee Structure	\$2.00 per-foot per-night.

Infrastructure & Port Services		
Critical Terminal Data	Scott Vogel, Castine Harbormaster P.O. Box 204 Castine, ME 04421 207-266-9392 harbormaster@castine.me.us	LAT 44° 23' 13.9"N LON 68° 470' 45.2"W
		<ul style="list-style-type: none"> Tendering Port Only <p>Up to 375'</p> <p>Up to 420 passengers</p>
Piers & Gangways	There are 2 public town wharves with float systems. <ul style="list-style-type: none"> Float #1 is 170' used primarily for transient yacht mooring. Float #2 is 90' and is used for drop off and cruise ship tender operations. 	
Tugs	3 full time ship assist tugs up to 4,000 HP-Belfast Penobscot Tractor Tug Co. 207- 671-4878.	
Port Services	<ul style="list-style-type: none"> ✓ MTSA - Public Access Facility for non-SOLAS vessels (Public Landing) ✓ Limited 	
Guest Services	Direct walking access to downtown sites and activities from the Town Dock. <ul style="list-style-type: none"> ✓ Visitor information (limited) ✓ On-site Restrooms ✓ Free Wi-Fi <p>✚ 36 miles Waldo County General Hospital</p> <p>✈ 42 miles Bangor International Airport</p>	
Planned Upgrades	Cosmetic improvements to wharf area.	
Notional Projects	None.	

Climate	
Weather	Castine Summers are comfortable, the Winters, however are very cold and blustery. It is partly cloudy year-round. The wettest month is November with about 4.2 inches (106 mm) of rain. January is the driest month averaging 1.7 inches (43 mm) of rain. July and August are similarly dry at about 2.6 inches of rain (66 mm). The windier part of the year is October to April, with average wind speeds of 7.3 MPH from the North or West. The calmer time of year is from April to October with winds predominately from the South at 5.2 MPH on average. Fogs can occur most frequently in Spring and Summer but happen each month of the year. The warmest month is July with an average high of 77 °F and an average low of 60 °F. The coolest month is January with an average high of 30 °F and an average low of 14 °F.

Navigation	
Approach	<ul style="list-style-type: none"> • Castine, is located on the North side of the Bagaduce River which empties into the Eastern side of Penobscot Bay. • A Recommended Route through Penobscot Bay is established to improve navigation safety of larger ships (the recommended route is well marked on the navigation charts). The routes are comprised of directed traffic lanes each with one-way inbound and outbound traffic. • Use NOAA charts 13309, 13302, 13303 and 13305. • The area may have extensive lobster buoys and commercial Castine Harbor is at the entrance to the river, with the town and facilities about 1 mile from the mouth. • The harbor has ample depth for deep draft vessels (50'70') and is easily entered. • The area may have extensive lobster buoys and commercial fishing activity. • The Bagaduce River is a Marine Protected Area (MPA). • Note that the offshore approaches to Penobscot Bay are an endangered Right Whale habitat.
Channel Controlling Depth	• River and harbor depths range from 50' -70'.
Depth at Dock	13'.
Under Keel Clearance	The recommended industry standard is 10% of the vessel's deepest draft or 3' under keel (whichever is greater).
Tidal Range	11'.
Max Current	Currents of 1.5 knots are typical but can be up to 3 knots.
Anchorage	<ul style="list-style-type: none"> • Smith Cove offers a sheltered anchorage for smaller vessels with good access to Castine. The water depth is 20'-27'.
Pilots	<p>Pilotage is compulsory for all foreign vessels and U.S. vessels under register in the foreign trade drawing over 9'. There are two pilot boarding areas:</p> <ul style="list-style-type: none"> • Eastern entrance to Penobscot Bay via Lighted Whistle Buoy PBA at 43°55'37"N, 68°39'37"W and follow the Recommended Route due west. The pilot will board 3 miles East of Penobscot Bay Lighted Buoy WP at 43°55'30"N, 68°48'48"W. • Western entrance, pilots will board at 43°46'36"N, 69°22'36"W approximately 1 mile north of Manana Island (virtual AIS Aid to Navigation) V-AIS "14M" (43°45'19"N, 69°22'28"W). The pilots require 36, 24- and 12-hour ETAs, as no pilot boats are maintained on station. • Castine is 42 miles from the Two Bush Channel pilot station and 29 miles from Matinicus. • Penobscot Bay and River Pilots Inc. 207- 548-1077.
Turning Basins	There is a deep-water area adjacent to the town that offers at least a 1200' turning diameter.

Port Fees	
Fee Structure	No fees.

Infrastructure & Port Services		
Critical Terminal Data	Charlie Phippen, Bar Harbor Harbormaster 21 Ells Pier Bar Harbor, ME 04609 Ph: 207-288-5571 bhhmaster@barharbormaine.gov Online Reservation Request Form: http://barharbormaine.gov/FormCenter/Harbor-5/Cruise-Ship-Resevervation-Date-Request-47	LAT 44° 24' 57"N LON 68° 14' 57"W
		<ul style="list-style-type: none"> Principally Tendering Port Only Up to 1100' Up to 4,300 passengers Up to 170' at the Town Pier
Piers & Gangways	Bar Harbor Town Pier <ul style="list-style-type: none"> Able to accommodate ships up to 170'. 100' floating dock system with pier side bollards for mooring lines. Tendering <ul style="list-style-type: none"> Although the Town Pier can moor small ships, Bar Harbor is principally a tendering port. Large cruise ships use 2 privately owned tendering facilities site Harbor Place and Harbor Side using floating docks ranging between 140'-160'. 	
Tugs	3 full time ship assist tugs up to 4,000 HP-Belfast Penobscot Tractor Tug Co. 207- 671-4878.	
Port Services	<ul style="list-style-type: none"> ✓ Customs & Border Protection ✓ ISPS/MTSA Compliant (46 CFR 105) ✓ Potable Water ✓ Marine Supplies 	
Guest Services	Direct walking access to downtown sites and activities from berth. <ul style="list-style-type: none"> ✓ Visitor information ✓ On-site Restrooms ✓ Free Wi-Fi + 5 miles MDI General Hospital ✈ 9 Hancock County/Bar Harbor Airport 47 miles Bangor International Airport	
Planned Upgrades	A significant international ferry terminal is under development which will re-introduce daily high-speed vehicle/passenger service between Bar Harbor and Yarmouth, NS. The target opening date is June of 2019.	
Notional Projects	None.	

Climate	
Weather	Bar Harbor Summers are comfortable, the Winters, however are very cold. It is partly cloudy year-round. The wettest month is November with about 4.4 inches (111 mm) of rain. January is the driest month averaging 2 inches (50 mm) of rain. July and August are similarly dry at about 2.6 inches of rain (66 mm). The windier part of the year is October to April, with average wind speeds of 9.1 MPH from the North or West. The calmer time of year is from April to October with winds predominately from the South at 6.4 MPH on average. Westerly winds (SW to NW) can experience katabatic influences from the high elevations of Mount Desert. Mariners should anticipate gusts of 5-15 MPH higher than forecasted when winds are Westerly. Fog is present on average 53 days each year and is evenly distributed throughout the year with a slight maximum during mid-Summer. The warmest month is July with an average high of 73°F and an average low of 58°F. The coolest month is January with an average high of 31 °F and an average low of 16 °F

Navigation	
Approach	<ul style="list-style-type: none"> • Bar Harbor is located on Mount Desert Island on Frenchman Bay. • Vessels arriving from the East are requested to make their approach at the Eastern end of the Frenchman Bay Recommended Route at 44°14'54" N, 67°56'18" W. Vessels should then proceed along the Recommended Route toward Frenchman Bay Lighted Buoy FB. • Vessels arriving from the South are requested to approach from the Southern end of the Recommended Route, at 44°03'12" N, 68°08'36" W. Vessels then proceed along the Recommended Route to Frenchman Bay Lighted Buoy FB. • Use NOAA charts 13323 and 13318. • The area may have extensive lobster buoys and commercial fishing activity. • There is also heavy recreational boating and commercial schooner operations in the area. • The offshore approaches to Frenchman Bay are an endangered Right Whale habitat. • Bar Harbor/Frenchman Bay is a sewage no discharge zone.
Channel Controlling Depth	• The approach channel has water depth exceeding 140'.
Depth at Dock	10'-14' MLW.
Under Keel Clearance	Due to ample water depths Under Keel Clearance is not a concern.
Tidal Range	11' – 13'.
Max Current	Currents of .7 knots.
Anchorage	<p>There are 2 general (Federally designated) anchorages on the Eastern side of Mount Desert Island, 0.5- and 1.5-mile South of Bald Rock Ledge, respectively.</p> <ul style="list-style-type: none"> • General Anchorage A is Southward and Southeastward of the Eastern end of Bar Island in depths of 40' - 80'. • General Anchorage B is North of Bar Island in 50' - 80' water depth with a soft bottom.
Pilots	<p>Pilotage is compulsory for all foreign vessels and U.S. vessels under register in the foreign trade drawing over 9'. There are two pilot boarding areas:</p> <ul style="list-style-type: none"> • The pilots will board arriving vessels 3 miles seaward of Frenchman Bay Lighted Buoy FB, along the recommended route, in about 44°18'06"N, 68°04'00"W (Eastern approach) and 44°16'06"N, 68°07'48"W (Southern approach). • Bar Harbor is approximately 10 miles from either of the 2 pilot stations. • Penobscot Bay and River Pilots Inc. 207- 548-1077.
Turning Basins	Not applicable in Bar Harbor.

Port Fees	
Fee Structure	<p>Cruise Ship Port Fee</p> <ul style="list-style-type: none"> • \$4.37 per-passenger <p>Launch Landing Fee Harborside & Harbor Place</p> <ul style="list-style-type: none"> • \$4.37 per-passenger <p>Ships Docking at Town Pier</p> <ul style="list-style-type: none"> • \$1,000 per-ship per-day • \$2.00 per-passenger
Private Tendering Services	<p>If tendering services are needed, privately owned vessels may be available through BH Piers. Please contact Mike Siemion at mas1544@aol.com or 207-801-7024</p>

Infrastructure & Port Services		
Critical Terminal Data	Chris Gardner, Executive Director Eastport Port Authority 141 Water Street Eastport, ME 04631 207- 853-4614 director@portofeastport.org	LAT 44° 54' 21"N LON 66° 58' 59"W
		Up to 750' Up to 1,350 passengers
Piers & Gangways	Breakwater Pier (East) 400' including 2 mooring dolphins with a mean low water depth of 43'. Accommodates ships up to 750'. <ul style="list-style-type: none"> • 2-8' diameter Yokohama fenders. • 60' aluminum gangway. Breakwater Pier (North) 184' floating dock for ships under 275' (ship uses its own access).	
Tugs	3 full time ship assist tugs up to 2,100 HP- Eastport Port Authority 207- 671 - 4878.	
Port Services	<ul style="list-style-type: none"> ✓ Customs & Border Protection ✓ ISPS/MTSA Compliant (46 CFR 105) ✓ Fuel (trucks) ✓ Potable Water ✓ Sewage disposal ✓ Garbage Disposal ✓ Husbandry 	
Guest Services	Direct walking access to downtown sites and activities from berth. <ul style="list-style-type: none"> ✓ Visitor information ✓ Comfort Station ✓ On-site Restrooms ✓ Free Wi-Fi ✓ Shuttle / Tour bus (49 passenger) ✓ Itinerary Planning ✓ Optional Tour packages (with 49 passenger motor coach) ✓ Water / Tour Bus Access to Roosevelt International Park ✓ Additional Maritime / Fishing Tour activities – Kayak friendly <div> <div>+</div> 27 miles Calais Regional Hospital / Walking to Eastport Healthcare Clinic / Pharmacy </div> <div> <div>✈</div> 1-mile Eastport Municipal Airport 120 miles Bangor International Airport </div>	
Planned Upgrades	None.	
Notional Projects	None.	

Climate

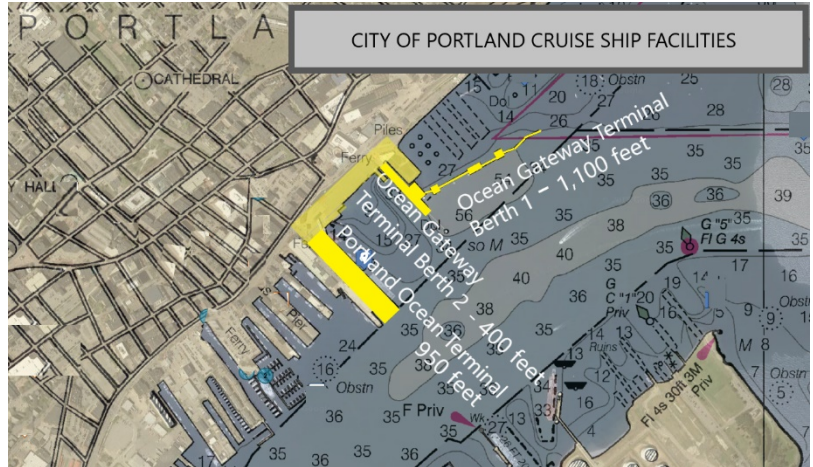
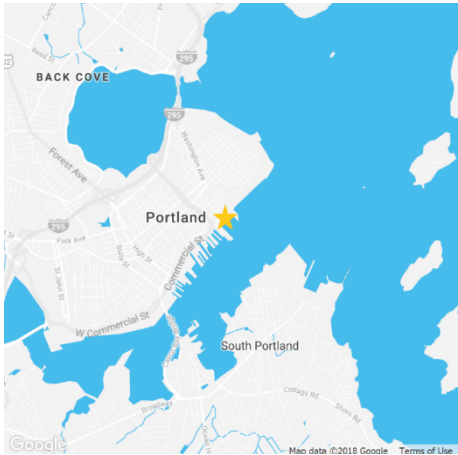
Weather	Eastport Summers are comfortable and sometimes cool, the Winters, however are very cold with significant snow. It is partly cloudy year-round. The wettest month is November with about 4.2 inches (106 mm) of rain. February is the driest month averaging 1.8 inches (45 mm) of rain. June, July and August are similarly dry at about 2.8 inches of rain (66 mm). The windier part of the year is October to April, with average wind speeds of 9.1 MPH from the North or West. The calmer time of year is from April to October with winds predominately from the South at 6.5 MPH on average. Fog is present on average 112 days each year with a minimum occurrence during mid-Winter and a maximum during July and August. The warmest month is July with an average high of 70°F and an
---------	---

	average low of 56 °F. The coolest month is January with an average high of 30 °F and an average low of 14 °F.
--	---

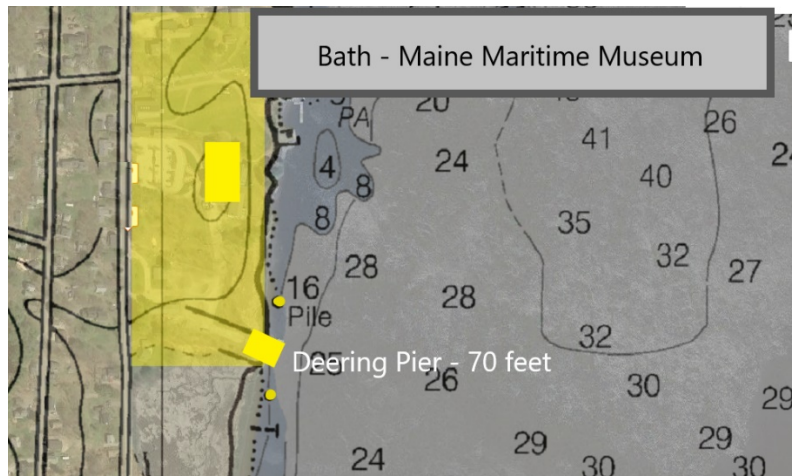
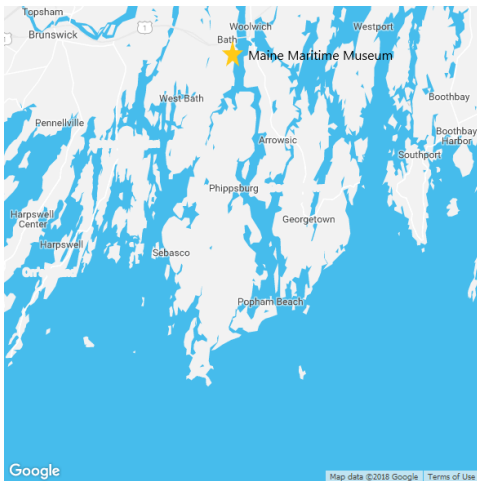
Navigation	
Approach	<ul style="list-style-type: none"> • Eastport is located near Passamaquoddy Bay and lies directly on Western Passage and Friar Roads, which is all adjacent to the Bay of Fundy. • The approach starts from a Traffic Separation Scheme with in-bound and out-bound traffic to St. John NB bisected by a Separation Zone. Deep draft vessels utilize a Vessel Traffic Service (Marine Communications and Traffic Services (MCTS)) located in Halifax, NS. • Direct port access is via Head Harbour Passage which is a deep and clear fairway, about 4 miles long, that follows the Northwestern side of Campobello Island from the sea to Friar Roads. • The port is unique in that the international boundary with Canada divides Friar Roads and Western Passage. The entire length of the transit from the pilot station to Western Passage/Friar Roads is in Canadian waters. • Use NOAA charts 13396 and 13260. • Note that the offshore approaches to Eastport are an endangered Right Whale habitat.
Channel Controlling Depth	<ul style="list-style-type: none"> • The approach channel has water depth exceeding 140'.
Depth at Dock	43'.
Under Keel Clearance	Due to ample water depths Under Keel Clearance is not a concern.
Tidal Range	24'.
Max Current	Head Harbour Passage current can attain a velocity of 5 knots at times. The flood sets strongly Westward toward the islands about 1 mile Northward of Campobello Island. The ebb generally sets in a reverse direction.
Anchorage	There are no Federally designated anchorages, however, Friars Bay (off Campobello Island) offers shelter and good holding ground. It should be noted that this location is in Canadian waters.
Pilots	<p>Pilotage is compulsory for all foreign vessels and U.S. vessels under register in the foreign trade drawing over 9'. There are two pilot boarding areas:</p> <ul style="list-style-type: none"> • The pilot boarding station is about 1 mile Eastward of East Quoddy Head at the North end of Campobello Island at 44° 57' 36" N 66° 52' 48"W. Foul weather and sea conditions may affect boarding time. A 24-hour estimated time of arrival is requested. • Eastport is approximately 10 miles from the pilot station. • Quoddy Pilots, USA 207-263-6403. • Eastport Pilots USA 207-853-6020.
Turning Basins	Not applicable in Eastport.

Port Fees	
Fee Structure	<ul style="list-style-type: none"> • \$2.00 per-foot per-day. • \$2.00 per-passenger. • Up to \$75 per hour for port security officers.

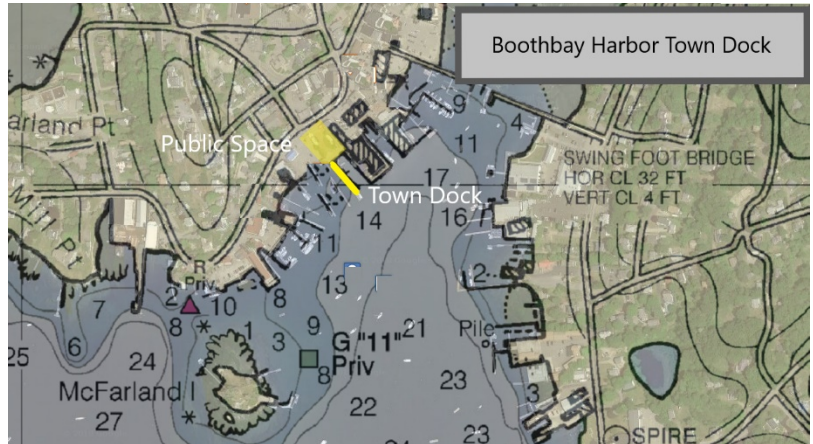
PORTLAND, ME



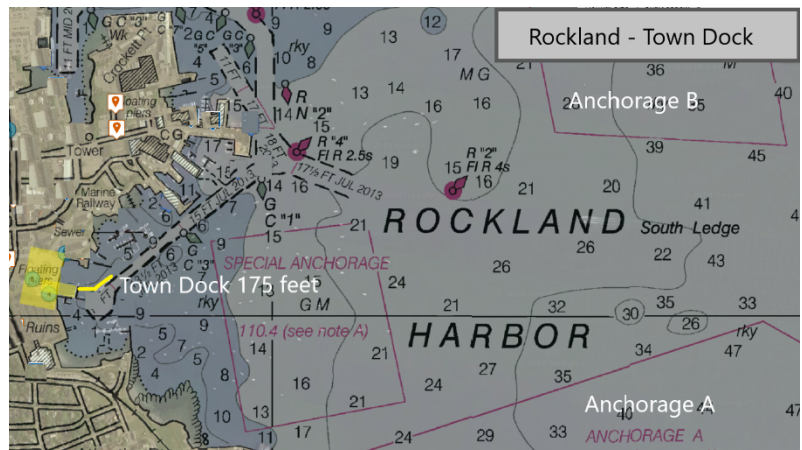
BATH, ME



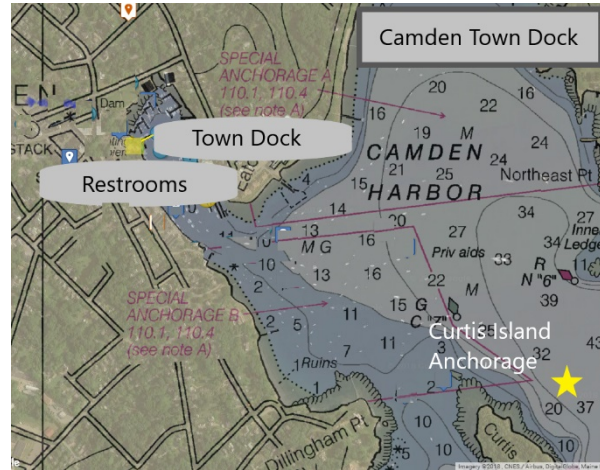
BOOTHBAY HARBOR, ME



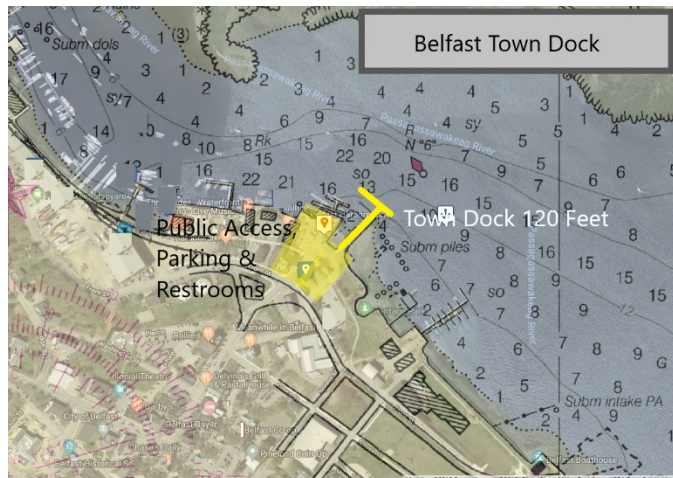
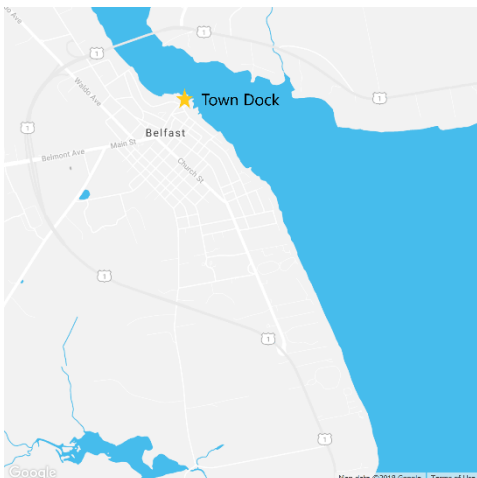
ROCKLAND, ME



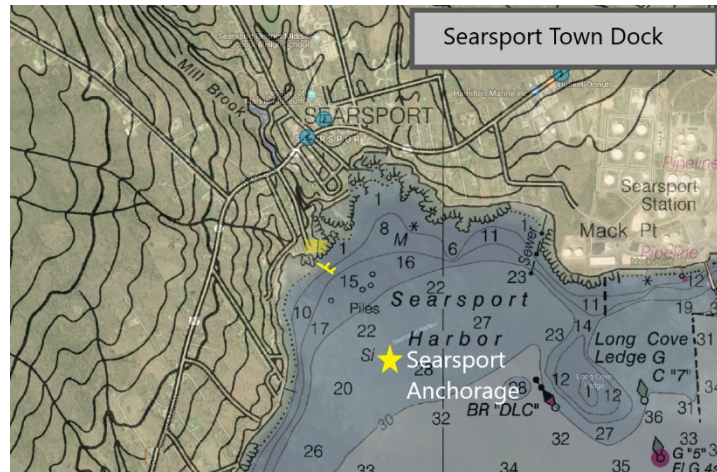
CAMDEN, ME



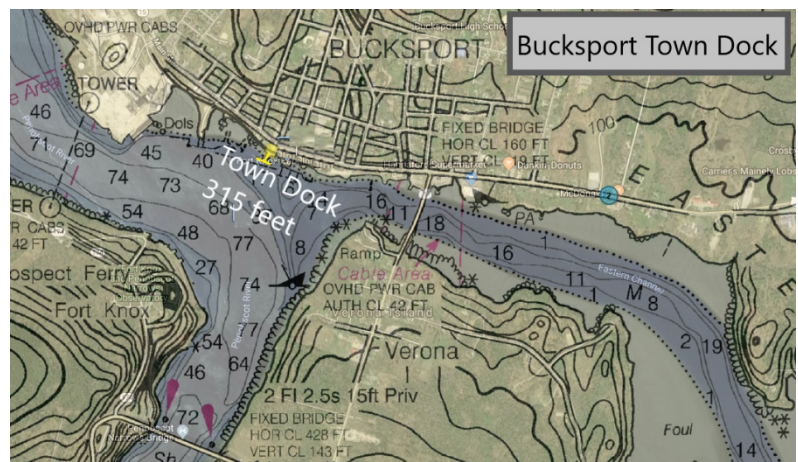
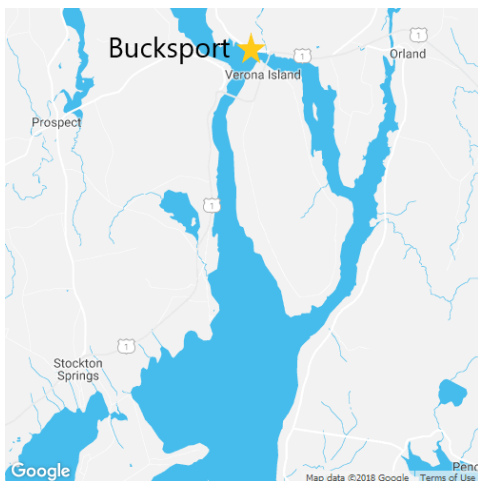
BELFAST, ME



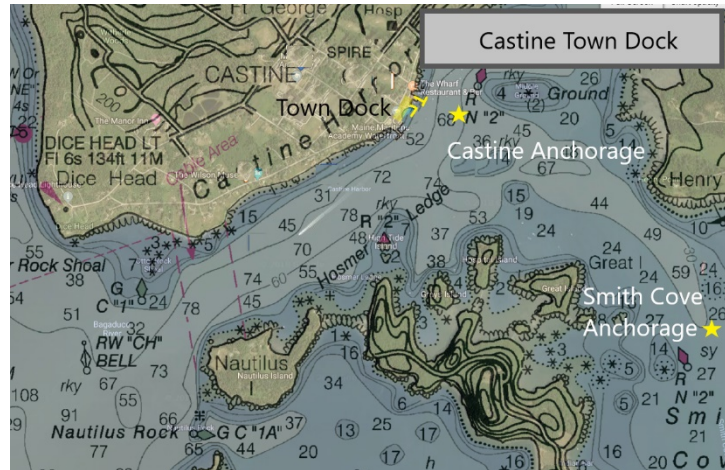
SEARSPORT, ME



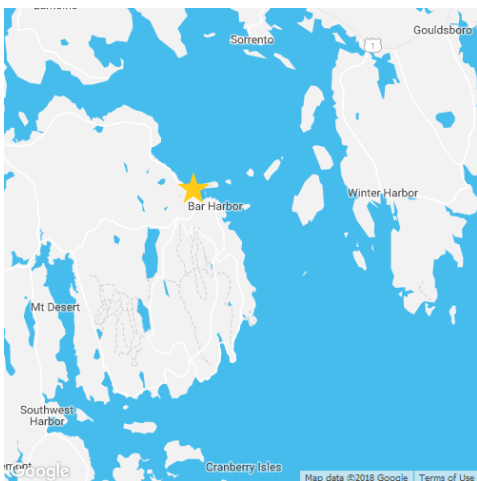
BUCKSPORT, ME



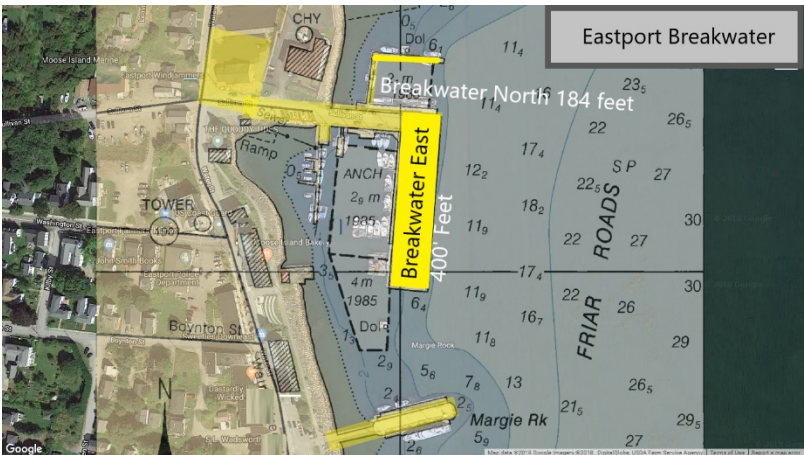
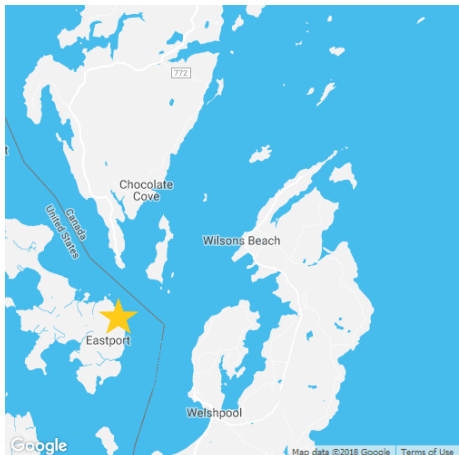
CASTINE, ME



BAR HARBOR, ME



EASTPORT, ME



APPROXIMATE SAILING DISTANCES BETWEEN PORTS

Approximate Sailing Distances Between Ports <i>Not to be used for navigational purposes</i>	Baltimore, MD	Philadelphia, PA	New York, NY	Boston, MA	Portland, ME	Bangor, ME	Bath, ME	Boothbay Harbor, ME	Rockland/Camden, ME	Searsport, ME	Belfast, ME	Bucksport, ME	Bar Harbor, ME	Eastport, ME (Saint Andrews/Campobello)	St. John, NB	Yarmouth, NS	Lunenburg, NS	Halifax, NS	Sydney, NS	Charlottetown, PEI	Iles de la Madeline, QC	Quebec City, QC	Montreal, QC
Portland, ME (Kennebunk/Freeport)	680	575	426	100	0	115	40	36	71	90	90	98	115	183	224	185	299	344	560	756	642	1130	1276
Bangor, ME	795	690	541	215	115	0	104	87	50	30	36	17	94	176	214	195	301	346	562	758	858	1132	1271
Bath, ME	720	615	466	140	40	104	0	23	59	47	47	33	103	173	184	145	263	308	573	610	618	1270	1236
Boothbay Harbor, ME	716	611	462	136	36	87	23	0	42	44	44	13	86	153	188	157	263	308	573	610	618	1270	1236
Rockland/Camden, ME	751	646	497	171	71	50	59	42	0	23	23	33	62	130	153	157	242	292	558	594	600	1255	1205
Searsport, ME	770	665	516	190	90	30	47	44	23	0	5	13	70	137	189	171	376	321	537	733	620	1107	1186
Belfast, ME	770	665	516	190	90	36	47	44	23	5	0	18	70	137	189	171	376	321	537	733	620	1107	1186
Bucksport, ME	778	673	534	198	98	17	86	13	33	13	18	0	77	145	199	179	386	331	547	743	843	1117	1196
Bar Harbor, ME	795	690	541	215	115	94	103	86	62	70	70	77	0	83	109	93	229	274	539	576	570	1015	1161
Eastport, ME (St Andrews & Campobello, NB)	863	758	609	283	183	162	173	153	130	137	137	145	83	0	50	94	250	295	511	707	578	1081	1215